

Using Learning Analytics to Explore Responses from Student Conversations with Chatbot for Education

<https://doi.org/10.3991/ijep.v11i6.23475>

Wan Mohd Amir Fazamin Wan Hamzah^{1(✉)}, Ismahafezi Ismail¹,
Mohd Kamir Yusof¹, Syarilla Iryani Mohd Saany¹, Azliza Yacob²

¹ Universiti Sultan Zainal Abidin, Terengganu, Malaysia

² TATI University College, Terengganu, Malaysia

amirfazamin@unisza.edu.my

Abstract—Chatbots simulate human conversations through computer programs using natural language. They are developed for a variety of reasons and purposes, as virtual characters and animators or as an interactive game component. Today, Chatbots for education are widely used to allow students to engage with learning content on an ongoing basis. In this study, students use the Chatbot to query web programming learning content such as code description, coding and problem-solving. However, the Chatbot's successful responses to students' questions are unknown. The teachers also do not know the desired learning content of the students using the Chatbot. Thus, the objectives of this study are to explore the likelihood of a student getting successful responses in each conversation and to identify the learning content desired by the students. The learning analytics method is used to analyze the learning data from the Chatbot. The data analysis performed is descriptive analysis and binomial probability test. The results of the studies showed that the value of successful responses of the Chatbot is high. The learning content most desired by the students is related to three categories of web programming content, namely hypertext preprocessor (PHP), database and structured query language (SQL) and hypertext markup language (HTML). The Chatbot is updated based on the proposed actions to provide more efficient responses.

Keywords—chatbot, explore, conversation, learning analytics

1 Introduction

Chatbot is a computer program that can mimic human speech. Chatbot users can communicate through text or voice input on a computer screen with text or audio output. They are created for a wide range of reasons and purposes [1]. The integration of information and communication technologies to support online learning is very important today [2–5]. As part of the technological development of digital learning, Chatbot for education is now widely used [6].

Web programming is the most difficult programming subject for college students to understand [7–10]. Students need learning content support to be able to learn outside the classroom. Using Chatbot for education is one of the identified methods that can

help students get learning content at any time. However, teachers are not aware of the learning content desired by students who perform self-study using the Chatbot. It is likely that the Chatbot also provides answers that do not coincide with the students' desired learning content

Results from previous studies suggest that learning analytics can be used to explore student learning using online learning applications [11–16]. Learning analytics is a field of research that has its roots in various fields related to learning. Learning analytics research integrates several existing techniques such as action research, academic analytics, educational data mining (EDM), recommender systems and personal adaptive learning. Learning analytics is considered an umbrella and global term to describe the field of technology-enhanced learning (TEL). Learning analytics research focuses on the development of methods for analyzing and tracking trends in learning data obtained in educational settings, as well as the use of these methods to support learning experiences [17–21].

This study uses Learning Analytics to explore the responses of student conversations with Chatbot for Education. The results of the analysis are used to improve the learning content and functionality of the Chatbot. Exploring the learning content desired by students is important for them to get sufficient, accurate, and meaningful information [22]. The following objectives are identified to achieve the purpose of the study:

- Study Chatbot and Learning Analytics.
- Explore the probability of a student getting successful responses in each conversation.
- Identify the learning content desired by the students.

The structure of this article is as follows. Section 2 presents a review of the literature on the use of Chatbots and Learning Analytics. Section 3 presents the methodological aspects of the study. Section 4 presents the main results and discusses the relevance of the proposed approach

2 Literature review

2.1 Chatbots

Chatbots are generally developed to automatically provide specific information on conversations in a topic such as frequently asked questions, website guides, virtual support agents, virtual sales agents, survey takers, quiz hosts, education and chat room hosts [1, 23]. Chatbot simulates the language of human conversation with a text-based dialogue system on a computer program. Chatbots are initially developed using a simple keyword matching technique to find user input matches [24]. Subsequently, Chatbots are developed using different pattern matching algorithms to simulate fiction or real personalities [25].

Chatbots are currently developed to generate feedback based on a machine learning model or several heuristic search techniques to select feedback based on a predefined set of responses. Each module in Chatbot contains a set of keywords from users and

feedback from the system database. Modules in Chatbot are referred to as intentions or intents that describe keywords for information retrieval from users. Each built-in module describes the scope of content for a particular user conversation scenario interacting with Chatbot.

There are two models of Chatbot architecture commonly used for Chatbot development, namely the generative and retrieval-based models, as shown in Figures 1 and 2 [26]. Chatbot that uses a generative model is limited to responses that the Chatbot developer has determined. The generative model can generate new dialogues through the collection and processing of large conversational training data. The Chatbot needs many examples and samples of conversations as a set of exercises to be used in the deep learning model towards producing quality conversations that can be implemented automatically.

The retrieval-based model Chatbot is trained to provide the best feedback from the feedback database that has been developed. The feedback provided is based on existing information. Chatbot development that uses this model is easier than the generative model. This model can provide more predictable feedback. The Chatbot of this kind uses an information database such as frequently asked questions to provide relevant feedback to the current conversation.

Chatbot for education is usually developed according to the learning content of a subject. It can understand the keywords and questions related to the learning content that has been set. Chatbot uses natural language processing and response to users. The Chatbot will ask the user to provide more information before the actual response is given if the question is not understood [27]. However, the answer is limited to the response that has been defined in the library. The lack of response in the library causes the answer that may not be accurate and does not meet users' desires [14].

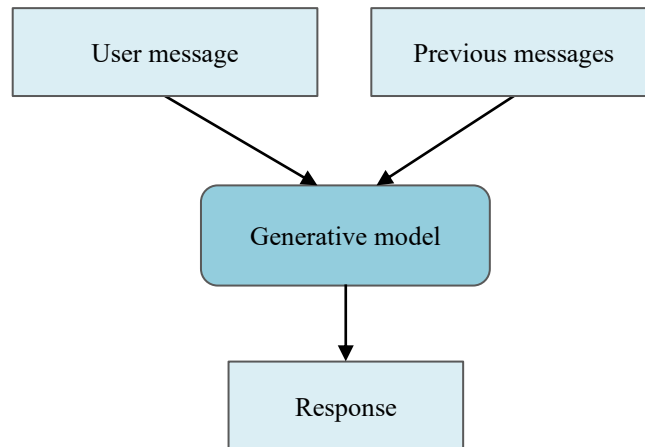


Fig. 1. Generative model

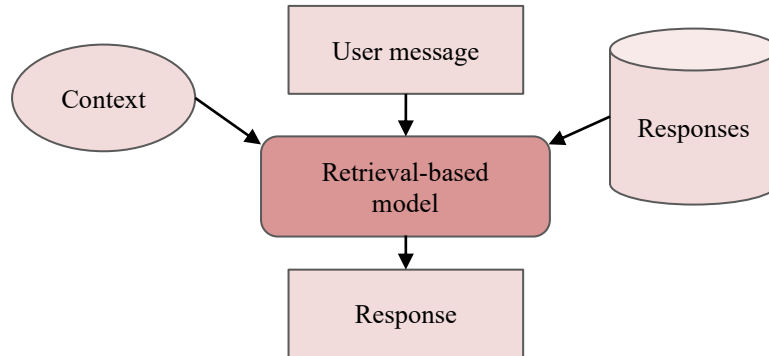


Fig. 2. Retrieval-based model

2.2 Learning analytics

Learning analytics is described as the collection, analysis, measurement, and reporting of data about users and their contexts with the goal of understanding and optimising learning and its environment [13, 25]. Another definition of learning analytics is the process of developing actionable insights through the definition of a problem and the use of statistical models and analysis of existing data and/or future data simulations [28]. Learning analytics is more concerned with making judgments and actions, which contrasts with EDM that focuses on developing methods to explore unique data types from educational settings. Although the techniques used in both areas are similar, EDM focuses more specifically on reduction analysis [29]. Future analytical techniques and tools developed from the two fields are expected to overlap [30]. Analytics in education can also exist at various levels, ranging from individual classrooms, departments, universities, regions, states and international. Shum, Knight & Littleton [31] classified this level of organisation as micro-analytic, meso-analytic and macro-analytic layers. Each level gains access to a different dataset of quantity, variety, and context.

The field of learning analytics encompasses three main components: tools, techniques, and application [29, 32]. Tools refer to the apparatuses used for learning analytics. In contrast, techniques refer to the methods used to perform learning analytics. Application refers to the use of these techniques to improve teaching and learning. According to Baker and Yacef [33], the five main areas of learning analytics and data mining are:

- Prediction requires developing a model that can infer one aspect of the data (predictive variable) from some combinations of other aspects of the data (predictor variable).
- Clustering refers to finding group data points that are naturally together and can be used to divide an entire data set into categories.
- Relational mining includes discovering associations between variables in a data set and coding as a later use rule.

- Distillation for human judgment is a technique that comprises data that describes how humans can identify or classify the characteristics of data quickly.
- Discovery with models is a technique that includes the application to study further a validated model of a phenomenon (developed through prediction, collection or technical manual knowledge).

The differences between the techniques and applications of learning analytics indicate the difficulty of researchers in explaining the definition and taxonomy of learning analytics [34]. The use of learning analytics to predict and model student activities allows early intervention to be performed to prevent dropouts from occurring [16].

Studies on learning analytics are related to Chatbot include prediction and personal learning [1, 35–37]. Predictive study in learning analytics is concerned with exploring the conversation data of Chatbot users. The data obtained are then analysed to explore Chatbot response in the future. Meanwhile, a personalised learning study is about analysing the data explored to enhance the learning experience. The learning rates and teaching approaches can be optimised for the needs of each user through personalised learning. Based on the previous study, the learning analytics approach is suitable to explore the responses of students' conversations with Chatbot for education.

3 Methodology

3.1 Chatbot development

Chatbots for education is developed based on the retrieval-based model for the subject of Web Programming. Chatbot development uses Android Studio (Integrated Development Environment (IDE) for android application development), Dart programming language, Flutter framework and Dialogflow platform. The use of the Dialogflow platform allows every conversation between the student and the Chatbot to be recorded using the built-in analytics and history functions. Figure 3 shows the conversational Chatbot architecture used. The descriptions of the figure are as follows:

- Student types a query in the chat client (mobile app).
- Chatbot reads and sends the query to the Dialogflow.
- Dialogflow extracts the student's intent and entities from the given phrase.
- The decision engine in Dialogflow will find the right intent for the response.
- Chatbot forwarded a response to the chat client.

The Chatbot will respond to each conversation with the student covering the learning content of the subject. The responses given are in the form of text, links to the web or multimedia content. The resulting responses are based on machine learning model and heuristic techniques that select responses from a predefined response library. Therefore, students will get the best response from Chatbot. Machine learning allows intention classification algorithms to be trained. Dialogflow offers a web interface for building and testing conversation scenarios.

In this study, the Chatbot mobile app used the Android platform and the Telegram Bot app. The Chatbot mobile app for the Android platform shows in Figure 4, while the Chatbot for the Telegram Bot app shows in Figure 5. Students need to type a query and Chatbot response immediately.

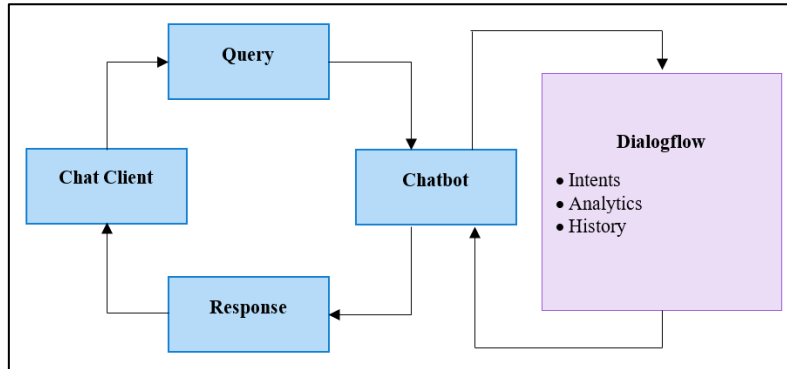


Fig. 3. Conversational chatbot architecture

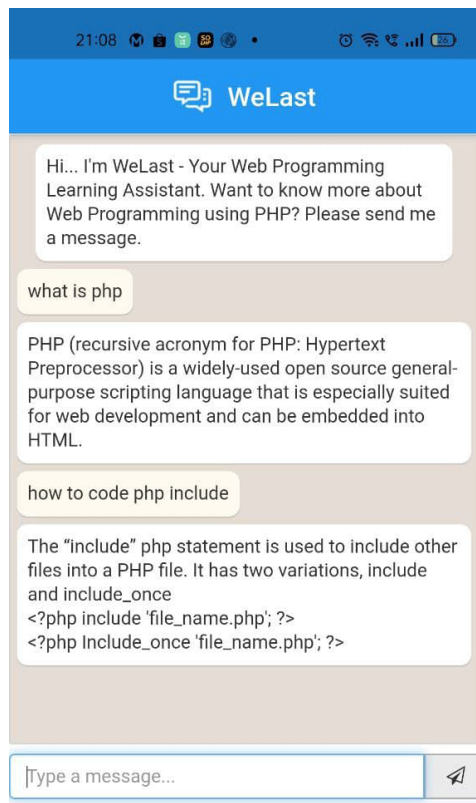


Fig. 4. Chatbot mobile application for Android platform

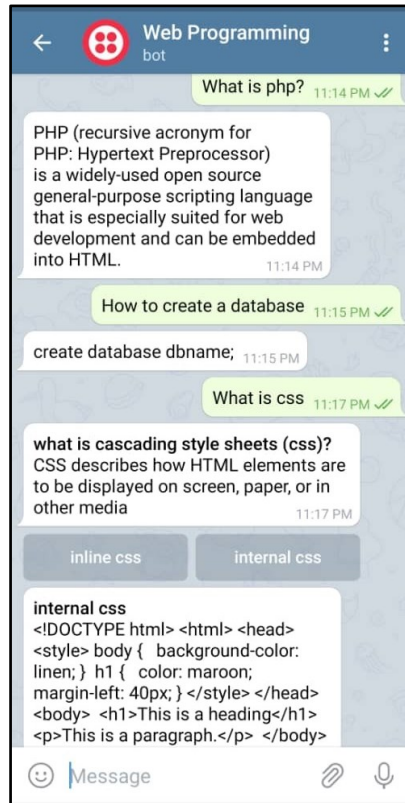


Fig. 5. Chatbot for Telegram Bot application

3.2 Sample and procedure

This study focused on exploring the learning content desired by the students who use Chatbot for education (Android mobile app and Telegram bot) in a public university. The study data included 513 total responses from 47 students' conversations with Chatbot over 90 days. This study did not consider students' demographics and experience using the Chat app since they all had similar backgrounds. All students are involved in using Chatbot as their self-learning assistant.

Siemens's learning analytics model was used as a reference to explore the learning content desired by students who use Chatbot for education [34]. Figure 6 shows the model of learning analytics used. The five main components of this model of learning analytics are:

- Data collection
- Data storage
- Data cleaning and filtering
- Data analysis
- Action

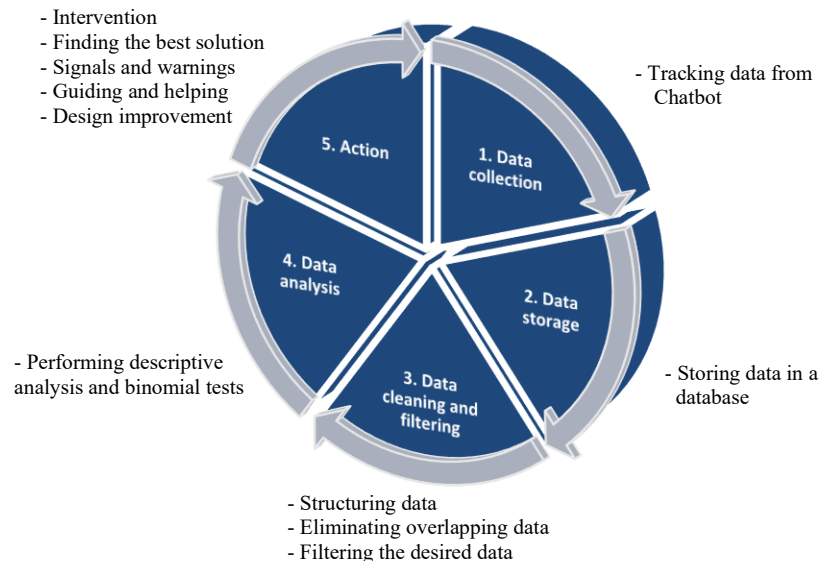


Fig. 6. Model of Learning Analytics

Data collection. Dialogflow in Chatbot development allowed students' learning data to be tracked automatically. The analytical data tracked were conversation sessions, intents and session flow. Conversation sessions are about the frequency of a conversation session and the frequency of queries for each session by day. The frequency of inquiries can also divide into periods of 7 days and 30 days. Meanwhile, the session flow is a view of the route commonly taken by the students, including the exit point based on the 30 days of the session data. The history menu of Dialogflow serves to store all records of Chatbot students' conversations. Recorded conversations included all platforms that use Chatbot. All of them are tracked, including the intended conversations that do not match in the response library.

Data Storage. Learning data resulting from student conversations using Chatbot for education was also stored on the Dialogflow platform. The data consisted of student query data, Chatbot responses and conversation sessions. Dialogflow also stores data of successful and unsuccessful responses in each conversation session between students and Chatbot.

Data Cleaning and Filtering. The process of cleaning and filtering is done on the learning data collected. In this process, unstructured data were first structured before being cleaned and filtered. The learning data that need to be cleared are overlapping data, including data that have the same identification at the same time. It is to avoid analysis that is being done on the same data.

Data Analysis. Analysis of conversation data was done to identify the content desired by students. The data analysis performed included descriptive analysis and binomial probability testing. The description for each analysis is as follows:

- Descriptive analysis - The analysis was performed based on successful and unsuccessful responses.
- Binomial test - This test was performed to determine the probability of a successful conversational response [38]. The test features are as follows:
 - (a) This test involves repeated trials.
 - (b) Each attempt has only two possible outcomes – successful or unsuccessful.
 - (c) The probability that a particular result will occur in each given experiment is constant.
 - (d) All trials in the test are independent.

Action plan. Actions proposed on students and Chatbot for education were based on results from data analysis. Previous researchers have suggested actions such as intervening, finding the best solutions, signals and warnings, guiding and assisting, and design improvements [34, 39–40].

4 Results and discussion

An analysis was performed by using the recorded learning data that included each conversation session's successful or unsuccessful responses. Successful response refers to a Chatbot response that coincides with a student query. On the other hand, an unsuccessful response refers to a Chatbot response that does not coincide with the student's query. In addition, the unsuccessful response also refers to the absence of an appropriate response in the Chatbot database when a conversation session occurs. Table 1 displays a partial descriptive analysis of response status from the 513 total number of responses recorded.

Table 1. Conversation and response status

Conversation	Response status
Update profile	Successful
Edit user using myqli procedural	Successful
Edit profile query	Unsuccessful
Edit user query	Unsuccessful
How to echo message with condition	Successful
Radio button	Unsuccessful
Insert using PHP	Successful
PHP insert	Successful
UncaughtPDOException	Unsuccessful
Database connection	Successful
How to make sign up	Successful
How to save from HTML to database	Successful
How to save form input to database	Successful
How to insert data from HTML to database	Successful
How to save data to database	Successful
How to code a shopping cart	Unsuccessful
Display record	Successful

The binomial test was performed to determine the probability of a successful response in each conversation [38]. Equation (1) shows the calculations for the binomial probability.

$$b(x; n, P) = {}_n C_x \cdot P^x \cdot (1 - P)^{n - x} \quad (1)$$

- x : The number of binomial test successes.
- n : The binomial test number of trials.
- P : The probability of an individual trial's success.
- ${}_n C_x$: The number of different combinations of x successes selected from a set of n trials.

$b(x; n, P)$: Binomial probability - The probability for n -test binomial tests to produce exactly x successes, when P is the success probability on an individual trial. The success probability in this study is 0.85 [41].

Binomial and cumulative binomial probability calculations are done as follows:

$$x = 434$$

$$n = 513$$

$$P = 0.85$$

$$b(434; 513, 0.85) = {}_{513} C_{434} \cdot (0.85)^{434} \cdot (0.15)^{79}$$

$$b(434; 513, 0.85) = 0.0472$$

Binomial probability = 0.0472; this value refers to the probability of obtaining the successful responses based on the 513 total number of responses.

$$b(x \leq 434; 513, 0.85) = b(x = 0; 513, 0.85) + b(x = 1; 513, 0.85) + \dots + b(x = 433; 513, 0.85) + b(x = 434; 513, 0.85)$$

$$b(x \leq 434; 513, 0.85) = 0.4186$$

Cumulative binomial probability = 0.4186; this value refers to the probability of obtaining 434 successful responses or fewer based on the 513 total number of responses.

Based on the binomial test, the values of successful responses are higher than unsuccessful responses. It means that the Chatbot has successfully met most of the learning content desired by students. The bar chart in Figure 7 shows the categories of 434 successful responses. It shows the three categories of learning content that the most desired by students, related to hypertext Preprocessor (PHP), followed by database & structured query language (SQL), and hypertext markup language (HTML). Hence, the others category refers to general student responses to the subject of Web Programming.

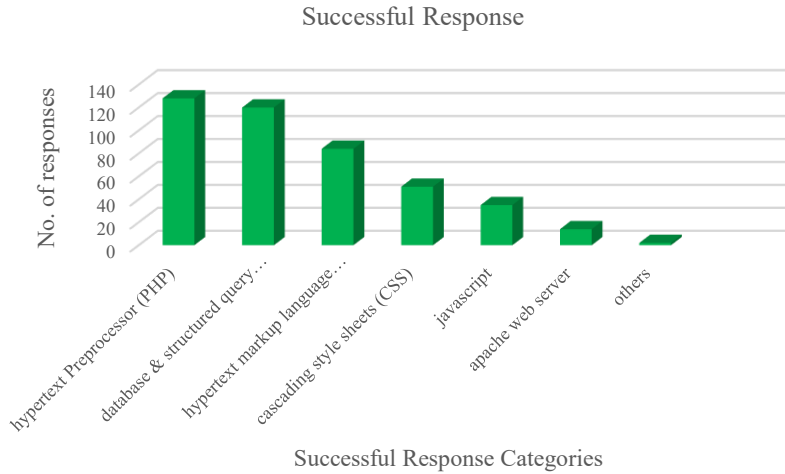


Fig. 7. Successful response categories

The bar chart in Figure 8 shows the categories of 79 unsuccessful responses. It shows the three categories of learning content the most desired by students: PHP, HTML, and databases & SQL. All three categories are similar to the successful response categories. It indicates that such categories are important for students knowledge. The others category refers to general student responses to the subject of Web Programming.

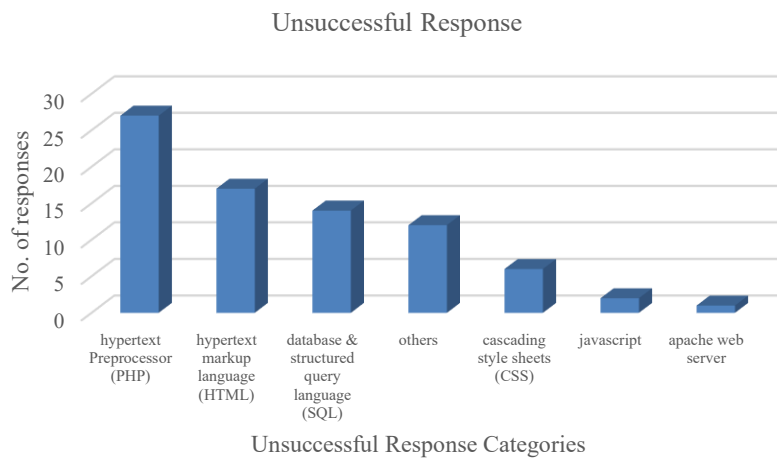


Fig. 8. Unsuccessful Response Categories

Based on the data analyses that have been done, the three categories of learning content most desired by the students were from the categories of PHP, database & SQL,

and HTML. These categories are important components in website development for Web Programming subjects. PHP is used as a back-end or server-side language and as a front-end language by integrating it with HTML. SQL is used for adding, accessing, and processing data in a database. PHP makes a call to the database using SQL when it receives the request from the user, then PHP obtains the requested information from the database and presents the requested information to the user.

The importance of learning contents from the categories of PHP, database & SQL, and HTML is supported and evidence with binomial tests. The analysis results also showed that the value of successful responses is higher than the unsuccessful responses. Even so, the learning content still needs to be updated based on changes in the version of the Web Programming language and the latest technology requirements.

Table 2 shows the proposed actions for Chatbot improvements based on the analysis performed. These proposed actions are important to generate higher values of successful responses in the future.

Table 2. Proposed Actions

Actions				
Intervention	Finding the Best Solution	Signals and Warnings	Guiding and Assisting	Design Improvements
Diversify the type of learning content in the response library	Research by interviewing students about their desired content	Instruct students to use Chatbot as a learning assistant	Provide guidance and assistance to students to use Chatbot	Redesign the Chatbot interface and functionality to attract student participation.

5 Conclusions

Chatbot for education is an innovative solution to bridge the gap between technology and education. Chatbots can provide immediate answers in conversational sessions with students who have questions about learning content. However, the Chatbot's response does not coincide with the students' desired learning content. Therefore, learning analytics is used to explore the responses of the students' conversations with the Chatbot. The analysis performed identifies the learning content desired by the students. This study successfully explored the probability of a student getting positive responses in each conversation and identified the desired learning content of the students. Chatbot learning content is updated for more accurate responses. Interactive features are added to ensure the Chatbot is more student friendly. The current study is limited to a batch of web programming students. Extension of the study to other batches of students will be pursued in the future to consider the effectiveness of the proposed actions.

6 Acknowledgement

This research paper is supported by the Centre for Research Excellence & Incubation Management (CREIM) and the Centre for Management of Academic Excellence & Internationalization (COMAEI), Universiti Sultan Zainal Abidin (UniSZA).

7 References

- [1] Wang, Y. F., & Petrina, S. "Using learning analytics to understand the design of an intelligent language tutor–Chatbot lucy". *Editorial Preface*, 4(11), 124–131, 2013. <https://doi.org/10.14569/ijacsa.2013.041117>
- [2] A. Yacob, Z. Baharum, and W. M. A. F. W. Hamzah, "ICT integration to support online learning during the COVID-19 outbreaks," *Int. J. Adv. Trends Comput. Sci. Eng.*, vol. 9, no. 1 Special Issue 4, pp. 192–197, 2020, <https://doi.org/10.30534/ijatcse/2020/2891.42020>
- [3] Julaily Aida Jusoh, Mohamad Amin Firdaus Ramli, Syarilla Iryani A. Saany, Ahmad Nazari Mohd Rose, Yousef A. Baker El-Ebiary and M. Hafiz Yusoff. "Tracing Students Attendance During Covid-19 Pandemic by Applying Location Detection Technology," *Psychology and Education* 58(1): 5441–5446, 2021. <https://doi.org/10.17762/pae.v58i1.2159>
- [4] Syarilla Iryani A. Saany, Elsayed M. S. S. Elawadi, Yasser M. Tarshany, M. Hafiz Yusoff, Yousef A. Baker El-Ebiary, Nur Hikmah Binti Ismail. "Utilising the AR and Mobile Apps to Show the Rhetorical Miracle of the Fetal Growth Stages According Quran," *IJFGCN*, 13(3), 1068–1081, 2020.
- [5] Fewella, Lina Nageb, Laila Mohamed Khodeir, and Aber Hamed Swidan. "Impact of Integrated E-learning: Traditional Approach to Teaching Engineering Perspective Courses". *International Journal of Engineering Pedagogy (iJEP)*, 11, no. 2, pp.82–101, 2021. <https://doi.org/10.3991/ijep.v11i2.17777>
- [6] S. Jacques, A. Ouahabi and T. Lequeu, "Synchronous E-learning in Higher Education during the COVID-19 Pandemic," *2021 IEEE Global Engineering Education Conference (EDUCON)*, 2021, pp. 1102–1109, <https://doi.org/10.1109/educon46332.2021.9453887>
- [7] K. Benmoussa, M. Laaziri, S. Khouli, K. M. Larbi, and A. El Yamami, "A new model for the selection of web development frameworks: application to PHP frameworks," *Int. J. Electr. Comput. Eng.*, vol. 9, no. 1, p. 695, 2019, <https://doi.org/10.11591/ijece.v9i1.pp695-703>
- [8] D. Weragama and J. Reye, "Analysing student programs in the PHP intelligent tutoring system," *Int. J. Artif. Intell. Educ.*, vol. 24, no. 2, pp. 162–188, 2014, <https://doi.org/10.1007/s40593-014-0014-z>
- [9] J. Appleton, "Introducing Intelligent Exercises To Support Web Application Programming Students," *ICICTE 2017 Proc.*, pp. 216–225, 2017.
- [10] S. B. Zaibon, F. N. Azman, and N. Shiratuddin, "Enhancing performance of student in web programming using digital educational comics," *J. Telecommun. Electron. Comput. Eng.*, vol. 10, no. 2–4, pp. 161–165, 2018.
- [11] Coffrin, C., Corrin, L., de Barba, P., & Kennedy, G. "Visualising patterns of student engagement and performance in MOOCs," In *Proceedings of the fourth international conference on learning analytics and knowledge*, pp. 83–92, 2014. <https://doi.org/10.1145/2567574.2567586>
- [12] J. C. Y. Sun, C. T. Lin, and C. Chou, "Applying learning analytics to explore the effects of motivation on online students' reading behavioral patterns," *Int. Rev. Res. Open Distance Learn.*, vol. 19, no. 2, pp. 209–227, 2018, <https://doi.org/10.19173/irrodl.v19i2.2853>
- [13] A. P. Montgomery, A. Mousavi, M. Carbonaro, D. V. Hayward, and W. Dunn, "Using learning analytics to explore self-regulated learning in flipped blended learning music teacher education," *Br. J. Educ. Technol.*, vol. 50, no. 1, pp. 114–127, 2019, <https://doi.org/10.1111/bjet.12590>
- [14] S. Sinha, S. Basak, Y. Dey, and A. Mondal, "An Educational Chatbot for Answering Queries," in *Advances in Intelligent Systems and Computing*, vol. 937, pp.55–60, 2020.

- [15] Ismail, H.M., Balkhouche, B. and Harous, S., "Mining Web Analytics Data for Information Wikis to Evaluate Informal Learning". *International Journal of Engineering Pedagogy (iJEP)*, 10(1), 2020. <https://doi.org/10.3991/ijep.v10i1.11713>
- [16] Gamage, D., Perera, I. and Fernando, S., "MOOCs Lack Interactivity and Collaborativeness: Evaluating MOOC Platforms". *International Journal of Engineering Pedagogy (iJEP)*10(2), pp.94-111, 2020. <https://doi.org/10.3991/ijep.v10i2.11886>
- [17] M. Man, M. H. N. Azhan, and W. M. A. F. Wan Hamzah, "Conceptual model for profiling student behavior experience in e-Learning," *Int. J. Emerg. Technol. Learn.*, vol. 14, no. 21, 2019, <https://doi.org/10.3991/ijet.v14i21.10936>
- [18] R. Ferguson, "Learning analytics: Drivers, developments and challenges," *International Journal of Technology Enhanced Learning*. 2012, <https://doi.org/10.1504/IJTEL.2012.051816>
- [19] W. Greller and H. Drachsler, "Translating learning into numbers: A generic framework for learning analytics," *Educ. Technol. Soc.*, 2012.
- [20] C. Romero and S. Ventura, "Data mining in education," *Wiley Interdiscip. Rev. Data Min. Knowl. Discov.*, 2013, <https://doi.org/10.1002/widm.1075>
- [21] K. Verbert, E. Duval, J. Klerkx, S. Govaerts, and J. L. Santos, "Learning Analytics Dashboard Applications," *Am. Behav. Sci.*, pp. 0002764213479363-, 2013, <https://doi.org/10.1177/0002764213479363>
- [22] W. M. A. F. W. Hamzah, H. Yusoff, and A. Yacob, "The Behavioural Intentions of Secondary School Students to Use Tablet as a Mobile Learning Device," *Int. J. Interact. Mob. Technol.*, vol. 19, no. 1, pp. 161–170, 2020, <https://doi.org/10.3991/ijim.v14i13.13027>
- [23] Aljojo, N., Munshi, A., Almukadi, W., Hossain, A., Omar, N., Aqel, B., and Alshamasi, A. "Arabic Alphabetic Puzzle Game Using Eye Tracking and Chatbot for Dyslexia." *International Journal of Interactive Mobile Technologies*, 12.5, 2018. <https://doi.org/10.3991/ijim.v12i5.8957>
- [24] Weizenbaum, J. "ELIZA---a computer program for the study of natural language communication between man and machine". *Communications of the ACM*, 9(1), 36-45, 1966. <https://doi.org/10.1145/365153.365168>
- [25] Shawar, Bayan Abu, and Eric Atwell. "Different measurement metrics to evaluate a chatbot system." *Proceedings of the workshop on bridging the gap: Academic and industrial research in dialog technologies*. 2007, <https://doi.org/10.3115/1556328.1556341>
- [26] Surmenok, P. (2016). Chatbot Architecture. Retrieved March 2, 2019, from <http://pavel.surmenok.com/2016/09/11/chatbot-architecture/>.
- [27] Shaha, S., Pokalwar, R., Agrawal, S., Udupikar, S. and Dhurape, B.K., "Information Chatbot for an Educational Institute". *International Research Journal of Engineering and Technology*, 7(2), pp.484-486, 2020.
- [28] A. Cooper, "What is 'Analytics'? Definition and Essential Characteristics," *CETIS Anal. Ser.*, vol. 1, no. 5, pp. 1–10, 2012.
- [29] G. Siemens and R. S. J. d. Baker, "Learning Analytics and Educational Data Mining: Towards Communication and Collaboration," *Proc. 2nd Int. Conf. Learning Analytics Knowledge - LAK '12*, pp. 252–254, 2012, <https://doi.org/10.1145/2330601.2330661>
- [30] Mining, Through Educational Data. "Enhancing teaching and learning through educational data mining and learning analytics: An issue brief." In: *Proceedings of conference on advanced technology for education*. p. 1-64, 2012.
- [31] Shum, S. B., Knight, S., & Littleton, K. "Learning analytics". In *UNESCO Institute for Information Technologies in Education*. Policy Brief. (2012).

- [32] Baker, R. S., and Inventado, P. S. "Educational data mining and learning analytics". In *Learning Analytics* (pp. 61-75). Springer New York. 2014. https://doi.org/10.1007/978-1-4614-3305-7_4
- [33] R. S. J. D. Baker and K. Yacef, "The State of Educational Data Mining in 2009 : A Review and Future Visions," *J. Educ. Data Min.*, vol. 1, no. 1, pp. 3–16, 2009.
- [34] G. Siemens, "Learning Analytics: The Emergence of a Discipline," *Am. Behav. Sci.*, vol. 57, no. August, pp. 1380–1400, 2013, <https://doi.org/10.1177/0002764213498851>
- [35] Benedetto, L., Cremonesi, P., and Parenti, M. A Virtual Teaching Assistant for Personalized Learning. *arXiv preprint arXiv:1902.09289*. 2019.
- [36] X. L. Pham, T. Pham, Q. M. Nguyen, T. H. Nguyen, and T. T. H. Cao, "Chatbot as an intelligent personal assistant for mobile language learning," *ACM Int. Conf. Proceeding Ser.*, pp. 16–21, 2018, <https://doi.org/10.1145/3291078.3291115>
- [37] D. Zumstein and S. Hundertmark, "Chatbots : an interactive technology for personalised communication and transaction," *Int. J. WWW/Internet*, 2018
- [38] W. Vogt, "Binomial Test," *Dict. Stat. Methodol.*, pp. 1–8, 2015, <https://doi.org/10.4135/9781412983907.n170>
- [39] A. Pardo, "Designing learning analytics experiences," in *Learning Analytics: From Research to Practice*, 2014.
- [40] K. E. Arnold and M. D. Pistilli, "Course signals at Purdue: Using learning analytics to increase student success," in *ACM International Conference Proceeding Series*, 2012, <https://doi.org/10.1145/2330601.2330666>
- [41] Radziwill, N. M., and Benton, M. C, "Evaluating quality of chatbots and intelligent conversational agents," *arXiv preprint arXiv:1704.04579*. 2017.

8 Authors

Wan Mohd Amir Fazamin Wan Hamzah is a Senior Lecturer at the Faculty of Informatics and Computing, Universiti Sultan Zainal Abidin (UniSZA), Malaysia. His research areas include learning analytics, e-learning, gamification, and machine learning.

Ismahafezi Ismail is a Senior Lecturer at the Faculty of Informatics and Computing, Universiti Sultan Zainal Abidin (UniSZA), Malaysia. His research focuses on computer games, computer animation, virtual reality, and augmented reality. (email: ismahafezi@unisza.edu.my).

Mohd Kamir Yusof is a Senior Lecturer at the Faculty of Informatics and Computing, Universiti Sultan Zainal Abidin (UniSZA), Malaysia. His research focuses on database, data integration and extraction. (email: mohdkamir@unisza.edu.my).

Syarilla Iryani Mohd Saany is a Senior Lecturer at the Faculty of Informatics and Computing, Universiti Sultan Zainal Abidin (UniSZA), Malaysia. Her research focuses on the semantic web, e-learning, computational linguistics, and intelligent systems. (email: syarilla@unisza.edu.my).

Azliza Yacob is a lecturer and researcher at University College TATI (UCTATI), Malaysia. Her research interests include Computer programming, Quality control, education, and computer industry. Her main research concentrates on the knowledge management system. (email: azliza@tatiuc.edu.my).

Article submitted 2021-04-21. Resubmitted 2021-09-08. Final acceptance 2021-09-11. Final version published as submitted by the authors.