

Implementation of an Intelligent Library System Based on WSN and RFID

<https://doi.org/10.3991/ijoe.v14i05.8601>

Yuping Gao

North China Electric Power University, Baoding, China

ypingg109@126.com

Abstract—To improve the intelligent management of the library, on the basis of manual and information management, new technologies were combined to design RFID wireless network with WSN consisting of nodes. Three modules of literature search positioning system, book whole frame system and automatic borrowing and returning door guard alarm system were mainly explored. The intelligent library system based on WSN and RFID used advanced RFID and ZigBee technology for the optimization and integration of literature resources, service process and management mode of the library. The library automation and intelligent interaction were realized and the concept of people-oriented was given full play to the maximum. The results showed that the intelligent library system based on WSN and RFID could basically realize the intelligent library management. To sum up, the system creates a random library service and management system at anytime and anywhere.

Keywords—WSN technology, RFID technology, library, intelligence

1 Introduction

Both WSN technology and RFID technology are the frontiers of the world. Library as a place for knowledge accumulation and dissemination is particularly important in the wave of information technology. The introduction of technology such as computer, Internet and barcode makes its development enter the digital age. However, management and service still need staff to check, find and borrow books by checking, searching and borrowing books, which is time-consuming and laborious, so readers often have to wait in line. With the increase of collections and number of readers, the demand is increasing, which has become the restricting factor of library development. The technology combining wireless sensor network of ZigBee and RFID is studied. In accordance with the present situation of library, intelligent system based on location is designed, so as to provide more convenient services for readers, which fully embodies the "humanization, information and automation" of intelligent management.

2 State of the art

The development of the library has experienced the traditional manual management, the data information method, the bar code management and so on. Through his study, Bissels, G. [1] designed an open source library management system. In his essay, Wilson, K. [2] introduced the next generation of library management systems. Shatte, A. et al. [3] proposed a context aware library management system based on mobile augmented reality. In the whole process, the efficiency of management has been greatly improved. Solanki and Kohli [4] pointed out that for large and medium-sized libraries, due to the large number of readers, there are many problems such as long queuing for borrowing books, theft of books, inventory statistics low accuracy and so on. How to effectively improve the efficiency with the modern new technology is the bottleneck of the development of the library. Li, S. et al. [5] considered that the technical challenges of RFID implementation include tag cost, standards, tag and reader selection, data management, systems integration and security. If WSN and RFID are combined with computer technology, intelligent management can be achieved, which greatly saves the library's service resources. The literature is monitored, and the service quality of the library is improved. Donno, D. D. et al. [6] presented and validated an innovative RFID-WSN integration approach. It relies on the interconnection of a new-generation, long-range, EPC global Class-1 Generation-2 Ultra-High-Frequency (UHF) RFID tag with a commercial WSN node via the I2C interface.

Wireless sensor network is a distributed multi-hop network system composed of a large number of sensor nodes through wireless communication. It combines the advanced technologies including modern network and wireless communication, microelectronics, embedded computing, distributed information processing and so on. It has the ability of collecting, processing, quantization, fusion and transmission network environment or monitoring objects in the area of information, and carries on the processing and sends to users through the wireless network after processing. Based on the two core technologies of internet of things -RFID and WSN, Gao, Y. X. [7] puts forward the realization of a heterogeneity gateway equipment which can support all kinds of sensor network and access network. Wei, Y. B. [8] thought that radio frequency identification (RFID) is a more advanced technology than bar code. The storage area of the RFID electronic label can be modified at any time, and because it is a radio wave transmission, the scope of action is not only limited to the field of vision. WSN technology has the advantages of large scale, unattended, remote sensing distance and low cost and its disadvantages are large power consumption and low identification and recognition ability. ChihMing Chen. [9] presents a novel intelligent mobile location-aware book recommendation system (IMLBRS) with map-based guidance to support cooperative PBL in a real-library environment. Zhu, K. X. [10] pointed out that ZigBee wireless sensor networks can be launched and established only by the coordinator. RFID technology has strong advantages in identification and recognition. It has some disadvantages such as two-way communication, long life and reliable performance and the disadvantages are poor anti-interference, short distance, high

cost, and reader dependence. Therefore, the combination of WSN technology and RFID technology has very broad prospect.

To sum up, for large and medium-sized libraries, due to the large number of readers, there are many problems such as long queuing for borrowing books, theft of books, inventory statistics low accuracy and so on. How to effectively improve the efficiency with the modern new technology is the bottleneck of the development of the library. To improve the intelligent management of the library, on the basis of manual and information management, new technologies were combined to design RFID wireless network with WSN consisting of nodes. The intelligent library system based on WSN and RFID used advanced RFID and ZigBee technology for the optimization and integration of literature resources, service process and management mode of the library. The intelligent library system based on WSN and RFID could basically realize the intelligent library management.

3 Design and implementation of system function

3.1 Analysis and design of network communication

Because this system is to realize the combination of WSN and RFID, there is a communication between wireless sensor nodes in the network communication, communication between RFID node and wireless sensor nodes, communication between nodes and coordinator, and communication between the coordinate device and the control server. As a result, in the network design, it should reflect the differences and achieve their integration in the implementation.

Design of ZigBee network and protocol stack: firstly, the network scheme is selected. The ZigBee wireless network is divided into chain-based linear structure, tree-based hierarchical network structure and grid-based planar stereo structure. This system uses a tree-based hierarchical network structure. The structure has the ability of distributed data processing. The cluster head receives data transmitted by cluster members, processes and removes redundancy, and then sends it directly to coordinator or multi-hop forwarding through other cluster heads. Tree network structure with cascade increases, the stability of the network would decrease, packets need greater delay and packet loss is more serious, affecting the quality of wireless network data transmission. In order to overcome the shortcomings, based on the practice of the library application, we take a fixed hierarchical tree type network structure, which simplifies the network structure and reduces the complexity and error probability of data transmission. Moreover, in the application in the positioning and monitoring, we can clearly see the topology between network nodes, facilitating the realization of the control center software.

Secondly, the network is established. ZigBee has formulated detailed network rules, and the normalization of wireless networks is a major feature of ZigBee. First of all, the coordinator sets the PANID and the application layer calls its unique NLME-NETWORK-FORMATION.request to the network layer for establishing the network request. The network layer receives the request and then carries out MAC

layer channel scanning. Through the energy detection scanning and active scanning, the most suitable channel is selected to build the network. Through the registration of primitives in MAC layer, the unique PANID not conflict with what exists is randomly selected. Next, PANID and channel scanning results are returned back to the application layer by confirm primitives.

Design of communication module of RFID and node: in order to ensure the integrity of data exchange between RFID reader and wireless network node, we need to set up a preamble coding before each packet for the formulation of communication protocol. When receiving the data, firstly, whether the data packets are integrated in verified. After determining the integrity of data packets, we must verify the correctness of data packets through CRC check, so as to avoid data damage in the package due to some external factors during transmission. Because RFID reader and network node have their own characteristics in information transmission, they are also different in frame format. In order to achieve interaction between them, we need to design a data frame format that can merge them.

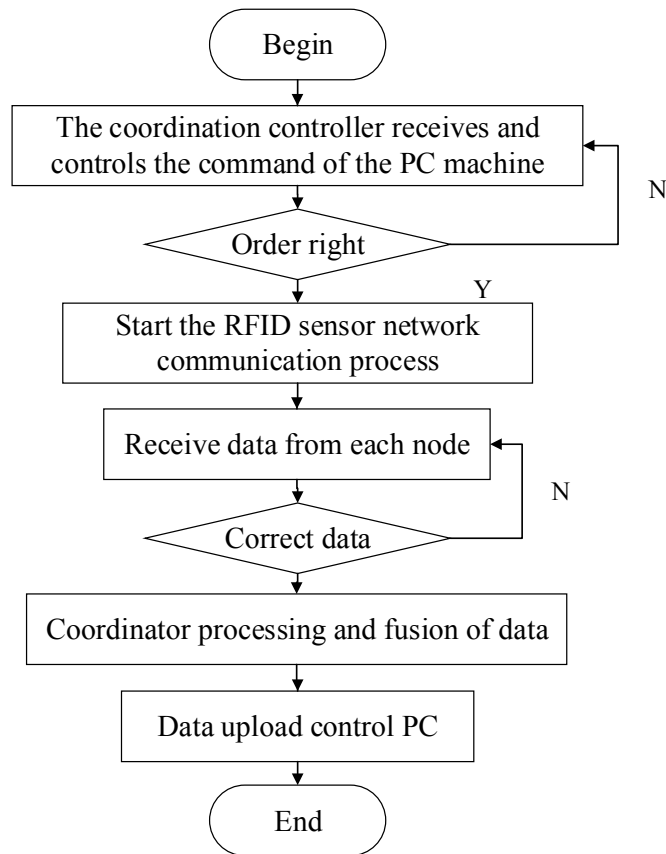


Fig. 1. Coordinator and control PC flow chart

Module implementation: the wireless network makes information interaction between the coordinator node and the control PC machine. On the one hand, data is transferred to coordinator for processing, processed and uploaded to PC. On the other hand, PC command is sent to identify the correctness of the command by coordinator, and then it is sent to the lower level device execution. Figure 1 is a communication process between the coordinator and the control PC machine.

3.2 PC software core module design

Document lookup location module: literature search. The technology combined with RFID and WSN can lighten the workload of managers. Readers can input the location search key on handheld devices or fixed devices, and get the detailed location information of the literature in the library, so that readers can help themselves find it.

First, the server computer can monitor the status information of books and literature through the combination of RFID and WSN, and can be stored in the database and updated in real time. The fixed RFID reader receives the command of the upper wireless network nodes, scanning the electronic labels on the books in small areas, getting the location information of the books, and uploading them to the server computer through the wireless network for data processing. Readers can input the books search keywords on a handheld device or a fixed device. The computer can automatically call specific location information of library from the database, which can realize the intelligent location search completely. Figure 2 is a book lookup flow chart.

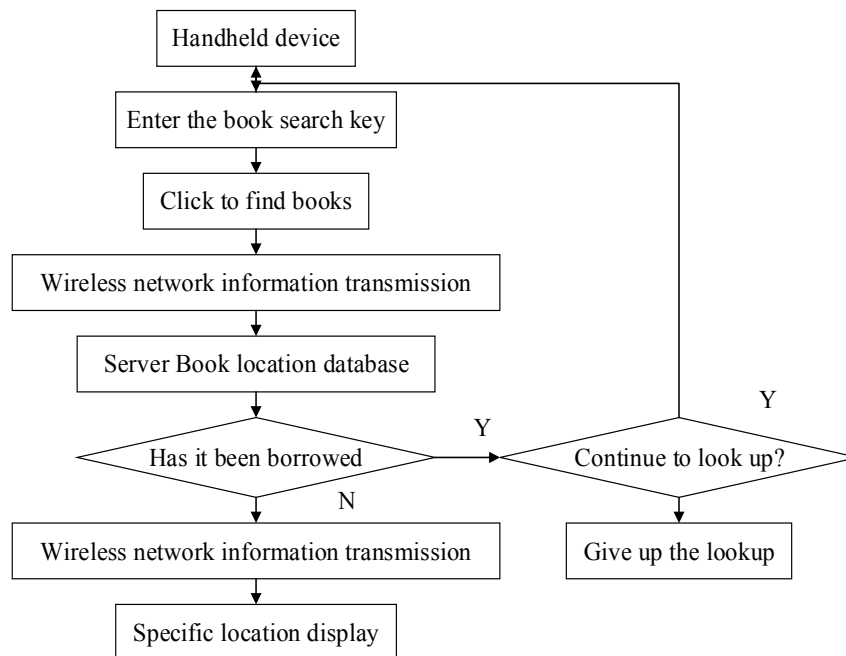


Fig. 2. Book lookup flow chart

The design of this module method is as follows:

Book search:

Method name: void FindBook(string BookInfo)

Process description:

```
{  
    Find books in the database based on the information received  
    If(Books are in the library)  
        Find book information and location and return information  
}
```

Reader orientation: the main function is to locate the position by the handheld device and the library card on the user's body. The use of library card positioning is basically the same as library monitoring and positioning. What different is that the reader is more active, and the literature is less mobile. In the wireless sensor network library layout, handheld devices, as a mobile node of the network, pass messages with the surrounding nodes, and passed to the control server through the wireless network for processing and then returned. The message returned is used to determine the location of the mobile node.

Book setting and inventory module: shelf management. This module is similar to books management. Each shelf has an electronic tag, and in each of the shelves on the bookshelf box area, it also posted with electronic tags. In the meanwhile, according to the bookshelf and bookshelf box electronic tags as well as the book category, a collection of classified category area is formed. By combining RFID and WSN technology, regional location interaction management is conducted on books on the shelf.

Book arrangement: the book collation can manage the books and documents in all directions from three aspects, which are books follow-up, loading on the shelves and book management.

Book management: this module does not require RFID or WSN technology, but only the workers operate the database on the computer. The new book is scanned and classified by handheld RFID equipment, and its position is located on the area, frame, box and sequence. Put the library information on the books and then carry on the loading operation.

Statistical inventory: since this system realizes the monitoring function based on wireless sensor network composed of RFID and WSN, the document management can be refined to each book as the unit. The module should make clear the type of inventory. Secondly, select the inventory type and then choose some kind of operation of someone who wants to take inventory of specific position at a certain time. Finally, we need to analyze the results of the inventory and print out the data in the format.

Automatically borrowing and returning door guard alarm module: the intelligent door guard alarm system is an open door control system, replacing the old magnetic door control system. Magnetic door guard alarm system is mainly scanning the magnetism of books through access control and judging whether to alarm based on whether there is magnetism or not. But we cannot know the information for books and readers. We can make up for this with RFID technology. Figure 3 is a kind of door guard alarm system device.

Automatically borrowing books: the automatic borrowing operation flow chart is shown in Figure 4.



Fig. 3. A kind of door guard alarm system device

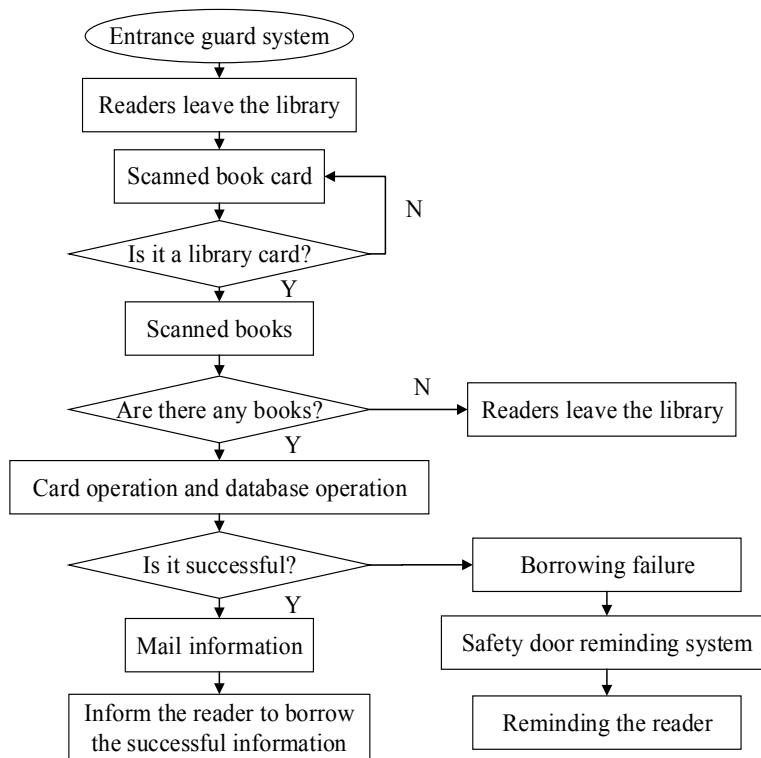


Fig. 4. Flow chart of automatic book access control system

This module provides readers automatically borrowing and returning books service. First of all, readers need to take with the electronic tag library card for entering

the library. Through the door guard alarm system, RFID reader installed on security door automatically induces the reading card of readers and notifies the control center that the reader enters the library. When readers selected target books, they can directly take the books out of libraries. Through the intelligent door guard alarm system, the install reader automatically scans the reading card on readers' body and electronic label inside books and transmits thereaders' and books' information to the control center. The system software on the computer callsreaders' borrowing information from the database based on the readers' information. If the number of readers' borrowed books is full, then return the prohibited borrowing command to the alarm prompt system. Inform readers of unable to borrow books and then the reader put the book back. If the number of readers' borrowed books meets the quantity requirements of borrowing books, the system marksthe borrowing relationship between readers and books in the database. And through the mail system, it sends email to the reader's email or mobile phone,prompt readers that the book has been borrowed with the borrowing time and time limit.

The main methods of this module are designed as follows:

Reading card and label scanning process description:

Method name: void ScanCard(int Num,string DSIFD,string UID)

According to the value of Num, intercept DSIFD and UID of labels

Based on the obtained DSIFD,judge whether the label is reader card or book label

```
For(i=1;i<Num+1;i++)
{
    If(Num=1) //only one card or label
    {
        If(Whether the reader's reading card is legal)
        {
            Database query, judge whether the reader enters or leaves the library and
identify
        }
        Else // It means that a book with a label is passed through the entrance
guard system
        {
            Emit a door guard alarm
        }
        Else //If Num is 0, it indicates no card or tag passing through the door guard
alarm system, thus unable to cause the reader response, so this is not possible. Num is
greater than 1, which are a card and the label greater than 1 in number or labels more
than two or more.
        {
            If(DSIFD is reader card)
            {
                If(The reader's reading card is legal)
                {
                    Record the reader number into the array and mark that the reader
leaves the library
                }
            }
        }
    }
}
```



```

        Else //others are the book label number
        {
            Record book numbers into arrays
        }
    }
}

```

When the Num cycle is completed, traverse and judge whether there is number of reader feature in the recorded number array. If there is, then the reader and the arraysaved books are defined as the lending relationship, and it sends messages to the mail system triggering it send borrowing notice email to the reader; if there is no number of reader feature in the recorded number array, what saved are book numbers. Then, these books are illegally taken out of the library, and it sends a message to the access control system and alarm.

Automatic return book: the reader enters the library with the returned books. When passing the intelligent door guard alarm system, the RFID reader scans the reader's library card and the electronic tag with books, sends the information to the control center, and indicates that the reader and the book have entered the library. The reader can put the book in the designated book return area, the bookshelf and so on. When the reader leaves the library, the reader scans the reader's card signal and transmits to the control center. The system indicates that the reader leaves the library, and sets the relationship between the readers and the books left in the library as a return relationship. Then, it sends mail to the reader's mailbox or cell phone to notify the reader the information of returning the book. At the same time, it tells the frame manager that a new book needs the whole frame. The operating process is shown in Figure 5.

The main methods of this module are designed as follows:

Read card and label scanning process description:

Method name: void ScanCard(int Num, string DSIFID, string UID)

Based on the value of Num, intercept DSIFID and UID of labels

In accordance with the obtained DSIFID, judge whether the label is reader card or book label

```

For(i=1; i<Num+1; i++)
{
    If(DSIFID is reader card)
    {
        If(The reader's reading card is legal)
        {
            Record the reader number into the array and identify the reader to leave
the library
        }
        Else // others are the book label numbers
        {
            Record book numbers into arrays
        }
    }
}
}

```

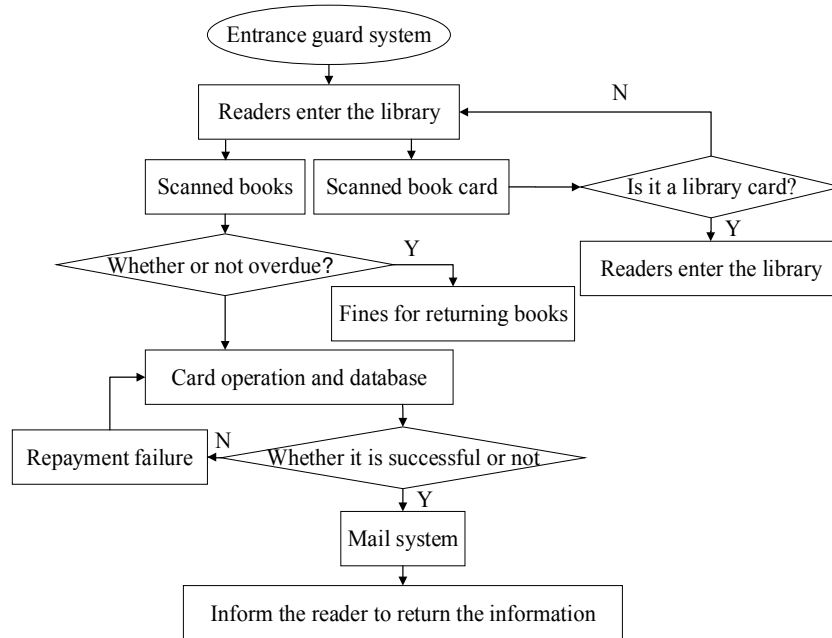


Fig. 5. Flow chart of automatic book returning door guard alarm system

When the Num cycle is completed, the readers and the books saved by the array are determined as the return relationship, sending messages to the mail system and prompting them to send the returned notification mail to the readers.

Reminding the mail system: the warning system is divided into two parts: the entrance guard alarm system and the mail system. The former is that the identification system on the door automatically alerts the unnormalized reader and book relationship through the security door when readers automatically borrow and return the book. The latter is, after automatically borrowing and returning back, the borrowing and returning information is automatically sent to reader's mailbox or cell phone in the form of sending mails. When the returning deadline approaches, the system will automatically prompt the reader to renew or return in this form. The system can also make new and good book recommendation. The reader can continue borrowing it via email or mobile phone text messages and put forward their comments and suggestions. Figure 6 is the operation flow chart of the door guard alarm system:

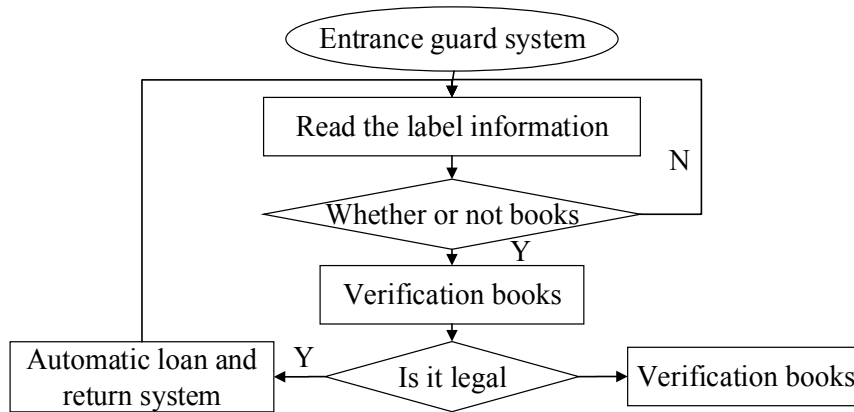


Fig. 6. Flow chart of door guard alarm system

This paper mainly introduces the operation related to the RFID reader and writer on the access control system. This module is designed as follows:

RFID reader operation:

Method name: TackTick()

Process description:

```

{
  Read label information
  If(information has been obtained)
  {
    Read label usage information
    Read label number information
    If(What read is the information of the book label)
    {
      If(The internal storage data of the label is not displayed in the library)
        Books have been borrowed and the door alarm is opened.
      Else
      {
        The book was not borrowed and the door alarm was started.
      }
    }
  }
}

```

4 Test and running results

4.1 Communication test of sensor nodes and RFID reader

Test purpose: this test mainly aims at communication between the wireless network nodes of the system and the RFID reader and writer.

Test scheme: due to test environment constraints, we test the communication between WSN node and the RFID reader and realize the simulation of middleware system using computer software program. The RFID reader is connected to the serial port to the computer and the computer is connected to the sensor node 1 in the network programming. Within the range of the distance, a sensor node 2 burn well is set. After the RFID reader recognizes, by computer, it sends the identification code to the sensor node 1 for launching. If node 2 received information, it indicates that the information transmission is successful.

Test results: as shown in Table 1.

Table 1. Test case

Test case	Whether the transmission information of the test system is normal.
Precondition	The compiled router1 and router2 are recorded to the two sensor nodes and 1 light flashes when the program runs. The RFID reader is serially connected with the computer and the sensor node 1 is connected with the computer serial port. The REID reader is used to identify the electronic tags, send information to the PC machine through the serial port and send the identification information on the PC machine to the sensor node 1 through the serial port. When the sensor node sends information, the 1 and 2 lights flash simultaneously. When the sensor node 2 receives the recognition information, the 1 and 2 lights are simultaneously flashing.
Test input	Electronic tag information identified by RFID reader and writer
Test output	The sensor 2 receives the RFID recognition information, and the 1 and 2 lights are simultaneously flashing.
Experimental result	Consistent with the expected results

4.2 ZigBee network transmission test

Test purpose: to test the transmission distance and packet loss rate of ZigBee network.

Test scheme: distribution test transmission distance between the two areas of a building. Meanwhile, in order to test the node packet loss rate, we set the acquisition mode. Node 1 sends a data to the coordinator node every three seconds and places the monitoring information node in a position to capture the data packets sent by transmission nodes. After a period of time, the actual received packets are compared with the data packets should be sent by sending node theoretically and network packet loss rate is obtained.

Test results: according to the above plan, we choose two different districts separately for several times to test, record the results, and combine all the test results to

objectively reflect the effect of transmission network. In theory, the transmission distance of cc2420 is 100m, but in actual test, the distance between the two walls is about 30m. After penetrating three walls, the performance is greatly reduced, and it is easy to be disturbed, resulting in sending packet loss. The test results determine the transmission distance of the Zigbee module in the actual working environment, which provides the basis for the network distribution in the building. The result of the packet loss rate test is shown in Table 2.

Table 2. Test result of packet loss rate

Conditions	Time	The number of sent packets	The number of received packets	Packet loss rate
Normal condition	1 hour	9000	8874	1%
Interfered situation	1 hour	9000	8765	2%

The test time starts from the initiation network, and the packet loss rate is about 1% under normal circumstances. After being disturbed by other Zigbee networks, the packet loss rate is increased when the network is built up. If the network is built up, the packet loss rate should be similar to that without interference. It is concluded that only when the Zigbee network is launched, the node search network is easily disturbed, and the network is basically stable after the network is established.

5 Conclusion

The advanced RFID and ZigBee technology is used in intelligent library system based on WSN and RFID. Specifically, the main contents and contributions of this paper are as follows:

1. Three modules of literature searching system, book whole frame system and automatic borrowing and returning control system are mainly studied.
2. The literature resources, service process and management mode of the library are optimized and integrated, and the library automation and intelligent interaction are realized.
3. The intelligent management of the library can be realized, and the random library service and management system at anytime and anywhere is established.

6 References

- [1] Bissels, G. Implementation of an open source library management system. *Program Electronic Library & Information Systems*, 2013, vol. 42(3), pp. 303-314. <https://doi.org/10.1108/00330330810892703>
- [2] Wilson, K. Introducing the next generation of library management systems. *Serials Review*, 2012, vol.38(2), pp. 110-123. <https://doi.org/10.1080/00987913.2012.10765438>
- [3] Shatte, A., Holdsworth, J., & Lee, I. Mobile augmented reality based context-aware library management system. *Expert Systems with Applications*, 2014, vol.41(5), pp. 2174-2185. <https://doi.org/10.1016/j.eswa.2013.09.016>

- [4] Solanki, S., & Kohli, J. Wireless sensor network: a survey. *Far East Journal of Electronics & Communications*, 2016, vol, 5, pp. 767-776. <https://doi.org/10.17654/ECSV3PII16767>
- [5] Li, S., Visich, J. K., Khumawala, B. M., & Zhang, C. Radio frequency identification technology: applications, technical challenges and strategies. *Sensor Review*, 2013, vol.26(3), pp. 193-202. <https://doi.org/10.1108/02602280610675474>
- [6] Donno, D. D., Stefanizzi, M. L., Catarinucci, L., Mainetti, L., Patrono, L., & Tarricone, L. Integrating passive uhf rfid tags with wsn nodes: challenges and opportunities. *Journal of Communications Software & Systems*, 2014, vol.10(2), pp. 99-106. <https://doi.org/10.24138/jcomss.v10i2.130>
- [7] Gao, Y. X.. The design and realization of the internet of things gateway based on rfid and wsn technology. *Applied Mechanics & Materials*, 2013, pp. 2845-2848.
- [8] Wei, Y. B. Design and implementation of intelligent community information system based on wsn technology. *Applied Mechanics & Materials*, 2014, vol.686,pp. 407-411. <https://doi.org/10.4028/www.scientific.net/AMM.686.407>
- [9] ChihMing Chen. An intelligent mobile location-aware book recommendation system that enhances problem-based learning in libraries. *Interactive Learning Environments*, 2013, vol.21(5), pp. 469-495. <https://doi.org/10.1080/10494820.2011.593525>
- [10] Zhu, K. X. Sensor - based condition monitoring and predictive maintenance—an integrated intelligent management support system. *Intelligent Systems in Accounting Finance & Management*, 2015, vol.5(4), pp. 241-258. [https://doi.org/10.1002/\(SICI\)1099-1174\(199612\)5:4<241::AID-ISAF109>3.0.CO;2-K](https://doi.org/10.1002/(SICI)1099-1174(199612)5:4<241::AID-ISAF109>3.0.CO;2-K)

7 Author

Yuping Gao is a teacher with Information centre of Library of North China Electric Power University, Baoding, China.

Article submitted 21 March 2018. Resubmitted 30 March 2018. Final acceptance 04 May 2018. Final version published as submitted by the author.